



**Shree** Nityanand  
Packaging



Trusted Manufacturer of Industrial Packaging Bags



## ABOUT COMPANY

Shree Nityanand Packaging, is a pioneering name in the woven packaging industry, proudly recognized as the first BOPP bag manufacturer in Kutch. Our establishment was born from a vision to provide industries with reliable, durable, and visually appealing packaging solutions that not only preserve product quality but also enhance brand value.

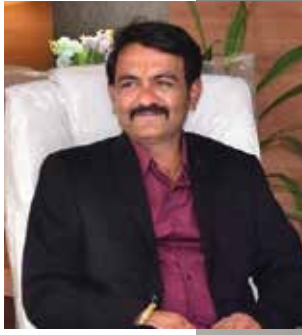
With a massive daily production capacity of 2,00,000 bags, we serve as a strategic partner to businesses looking for scale, consistency, and innovation in packaging. Our operations are powered advanced manufacturing facility located at Anjar (Kutch).



**With a production capacity of 2,00,000 bags per day, we specialize in PP & BOPP woven packaging for diverse industries.”**

# LEADERSHIP TEAM

**Mr. Nirav Suthar**  
Managing Director



**Miss. Shital Suthar**  
Director



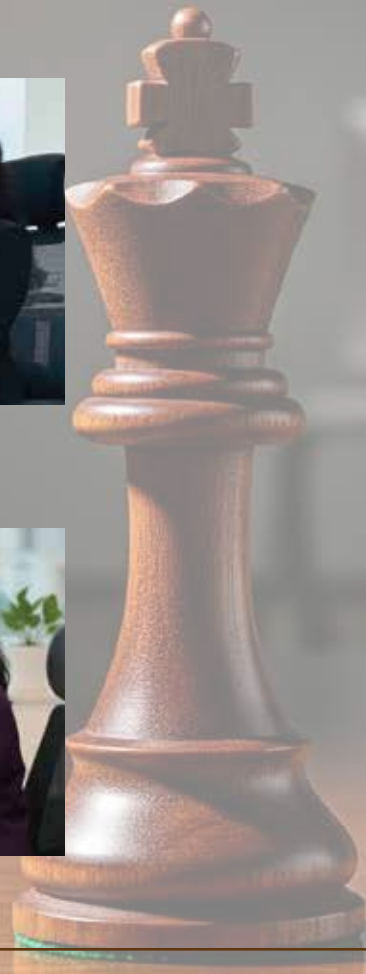
**Mrs. Hetal Suthar**  
Director



**Mrs. Daya Suthar**  
Director



This team has embedded values of trust, precision, and uncompromised quality into every aspect of our operations.



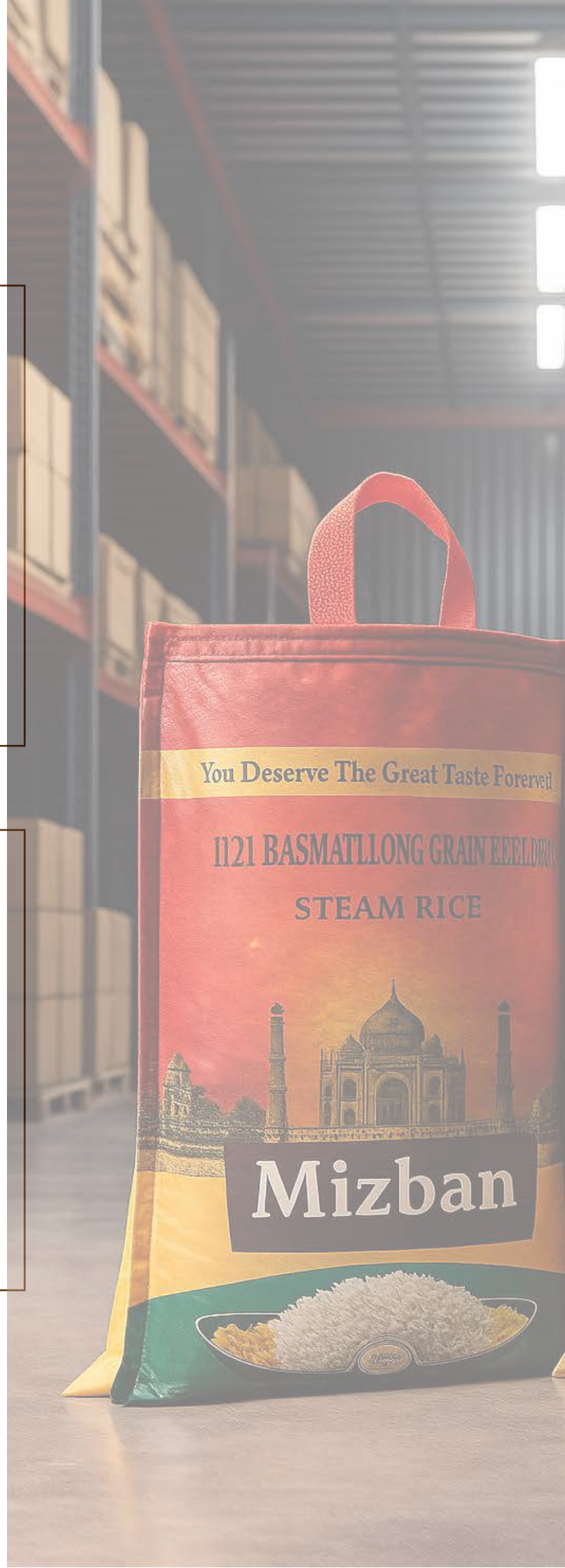
## MISSION & VISION & VALUES OF COMPANY

“

**Mission:** To deliver world-class PP & BOPP packaging solutions that safeguard products, add value to brands, and contribute to sustainable industrial growth.

“

**Vision:** To emerge as a globally recognized leader in the woven packaging industry, known for innovation, excellence, and customer satisfaction.





### **Quality First**

No compromise, ever.



### **Customer-Centricity**

Every client's requirement is unique, and we craft solutions to match



### **Innovation**

Continuously upgrading technology to remain ahead of industry standards



### **Sustainability**

Focus on eco-friendly, recyclable packaging for a better tomorrow.

## PP & BOPP WOVEN PACKAGING BAGS

“

We specialize in manufacturing **PP & BOPP woven bags** ranging from **5 kg to 50 kg**, available with or without transparent windows. Each bag is tailored to meet industry-specific requirements, ensuring maximum protection and branding appeal.





## KEY FEATURES OF BAGS



**Strength & Durability**  
Engineered to carry heavy loads without tearing.



**Moisture Resistance**  
Keeps products safe in challenging climates.



**Eco-Friendly**  
100% recyclable, supporting sustainable practices.



**Customization Options**  
Sizes, gussets, perforations, and handles as per client demand with best quality



**High-Quality Printing**  
We use world wide best quality Sakata inks that are moisture-resistant, non-fading, and visually vibrant.



This cutting-edge infrastructure, combined with our skilled workforce, ensures timely delivery, uniform finish, and world-class packaging standards

## ADVANCED MACHINERY



**High-Speed Rotogravure Printing Machine**  
250 m/min capacity



**Solvent-Based Lamination Machine**  
250 m/min capacity



**Lohia Lamination Extruder Machine**  
150 m/min capacity



**Lohia BCS**  
Bag Conversion System



**36 Stitching Machines**  
including specialized handle stitching for 10 kg BOPP bags



## OUR DAVANCED TECHNOLOGY MACHINERY



- **Lohia Tapeline & Looms** for in-house fabric manufacturing
- **Print n Roll Flexo Printing Machine** for flexible, high-definition printing





**SUPPLE TEK**  
GRAINS OF HONESTY

WORLD'S LARGEST EXPORTER OF INDIAN BASMATI RICE

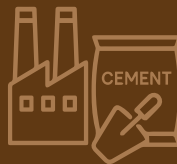
OUR CLIENTS



Our strong domestic presence and growing export network ensure that Shree Nityanand Packaging stands as a trusted global partner in woven packaging



Rice & Agro  
Industries



Cement &  
Construction Materials



Granules &  
Industrial Products

INDUSTRIES WE SERVE



# WHY CHOOSE US



**PIONEER:**  
First BOPP bag  
manufacturer in  
Kutch



**CAPACITY:**  
2 lakh bags/day  
production scale



**TECHNOLOGY:**  
Automated,  
high-speed  
machinery



**TRUST:**  
Preferred partner of  
leading industries  
and exporters



**QUALITY:**  
Backed by ISO and  
GPCB certifications



**COMMITMENT:**  
On-time delivery  
with customer-first  
approach



GPCB Authorization:  
AWH-81558



ISO Certification:  
QCC/159F/0725



Survey no.88,  
Mitha Pasvariya,  
Anjar, Kutch



[www.snityanand.com](http://www.snityanand.com)



+91 9638010803



[info@snityanand.com](mailto:info@snityanand.com)